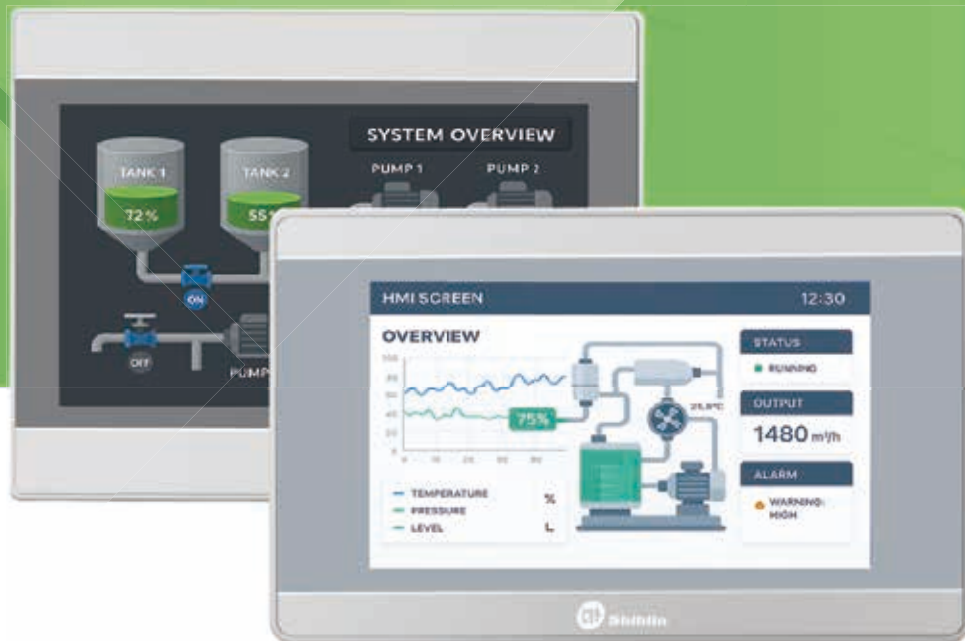


AUTOMATION FOR  
SMART MANUFACTURING

# SHIHLIN HMI HS Series



## About Shihlin Electric

Shihlin Electric & Engineering Corp. established in 1955, has devoted to researching and developing power related products, which cover Automobile Equipment System, Breaker Switchgear & System, Heavy Electric System, and Factory Automation. Our persistent belief of "improving over time" in running the operation and corporate development has not only made us a leader in the domestic market, but also performed splendidly in the overseas market. To make our brand awareness highly recognized, we perform cautious deployments and work hard on overseas marketing and sales.

The setup of overseas branches and factories had compliance with the rapid growth of product demand and to cater to the service of customer worldwide. Shihlin Electric, even with over 60 years of experiences, is still improving itself to better keep up with the globalization. Now, we spare no effort in searching for suitable business partner and expand our brand into global markets. We provide not just the qualified products but also excellent service and professional knowledge.

Now, with to the advance of science and technology, the market demand for electrical product would only grow exponentially. We hold great vision for the coming future. As we are in search of excellence, we do will take part in global competition



## Core Business Units

- \*Transmission & Distribution Electrical Products
- \*Power Control, Switches & Breakers
- \*Factory Automation Products
- \*Automotive Electrical Component Products

## HS Series -High Performance HMI



### Hardware configuration

Hardware configuration comparable to standard IPC with dual-core 1GHz ARM Cortex-A7, 128MB Flash/4GB eMMC +128MB/256MB DDR3



HD

High definition



High brightness

IPS

Full viewing angle



Various sizes



High Performance CPU



High-capacity storage

### Ethernet



### Software upgrade, stand-alone configuration

In HS Vision configuration software, users can freely configure the priority of Internet access, new right drop-down window interaction mode, users can customize the content of the window.

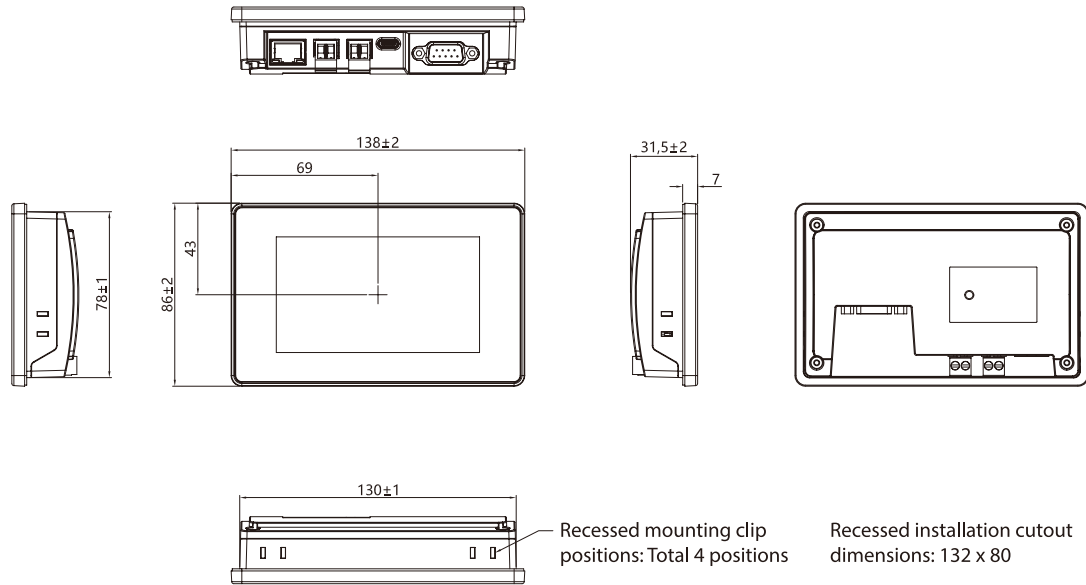
## Industrial HMI - HS Series

Model	HS7043WE	HS6370W
Display	4.3" 16:9 TFT LCD	7" 16:9 TFT LCD
LCD Viewing Angles (T/B/L/R)	80°/80°/80°/80°	85°/85°/85°/85°
Resolution	800x480	1024x600
Colors	16-bit	24-bit
Brightness	250cd/m <sup>2</sup>	350cd/m <sup>2</sup>
Touch Panel	4-wire industrial resistive touchscreen	
CPU	1GHz, dual-core Cortex-A7 Processor	1GHz, dual-core Cortex-A7 Processor
Memory	128MB Flash + 128MB DDR3	256MB DDR3+4GB eMMC
Ethernet	1*10M/100M	NA
USB Port	1*Type-C OTG	1*Type-C 2.0 port;1*USB Type-A 2.0 port
Program Download Method	USB Slave / Flash drive(with adaptor cable) / Ethernet	USB Slave / Flash drive
Serial Port	COM1: RS232/RS485/RS422 COM2: RS485 COM3: RS232	COM1: RS232/RS485/RS422 COM2: RS485 COM3: RS232
Rated Power	<5W	<10W
Input Voltage	DC24V, working range DC 9V~28V	
Power Protection	With lightning surge protection	
Power Interruption Tolerance	<5mS	
Certification	CE, RoHS	
Operating Temperature	0~50°C	
Storage Temperature	-20~60°C	
UV Resistance	Operating in high UV environment is prohibited	
Environmental Humidity	10~90%RH (Non-condensing)	
Vibration Endurance	10~25Hz (X, Y, Z direction 2G/30 minutes)	
Protection Level	Front IP65 ( with NEMA panel ), Rear: IP20	
Enclosure Material	Engineering plastic	
Cutout Dimensions	132mm×80mm	190mm×136mm
Dimensions	138mm×86mm×32mm	204mm×145mm×34mm
Weight	300g	476g

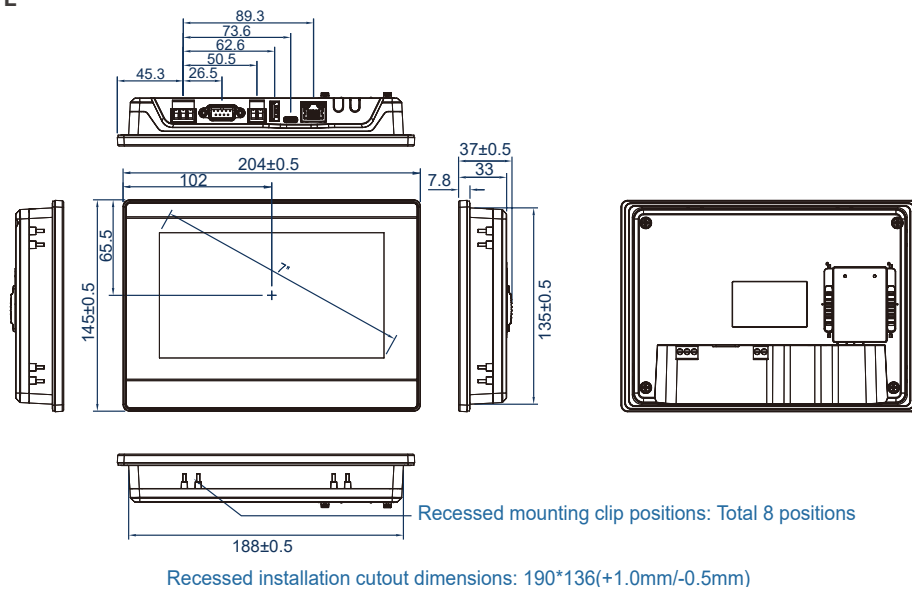
HS6370WE	HS6400W	HS6400WE
7" 16:9 TFT LCD	10.1"16:9 TFT LCD	
85'/85'/85'/85'	85'/85'/85'/85'	
1024x600	1024x600	
24-bit		
350cd/m²	400cd/m²	
4-wire industrial resistive touchscreen		
1GHz, dual-core Cortex-A7 Processor		
256MB DDR3+4GB eMMC		
1*10M/100M	NA	1*10M/100M
1*Type-C 2.0 port;1*USB Type-A 2.0 port		
USB Slave/Flash Drive/Ethernet	USB Slave/ Flash Drive	USB Slave/Flash Drive/Ethernet
COM1: RS232/RS485/RS422 COM2: RS485 COM3: RS232		
<10W		
DC24V, working range DC 9V~28V		
With lightning surge protection		
<5mS		
CE, RoHS		
0~50°C		
-20~60°C		
Operating in high UV environment is prohibited		
10~90%RH (Non-condensing)		
10~25Hz (X, Y, Z direction 2G/30 minutes)		
Front IP65 ( with NEMA panel ), Rear: IP20		
Engineering plastic		
190mm×136mm	260mm×202mm	
204mm×145mm×34mm	273mm×213mm×36mm	
476g	890g	920g

## Dimension

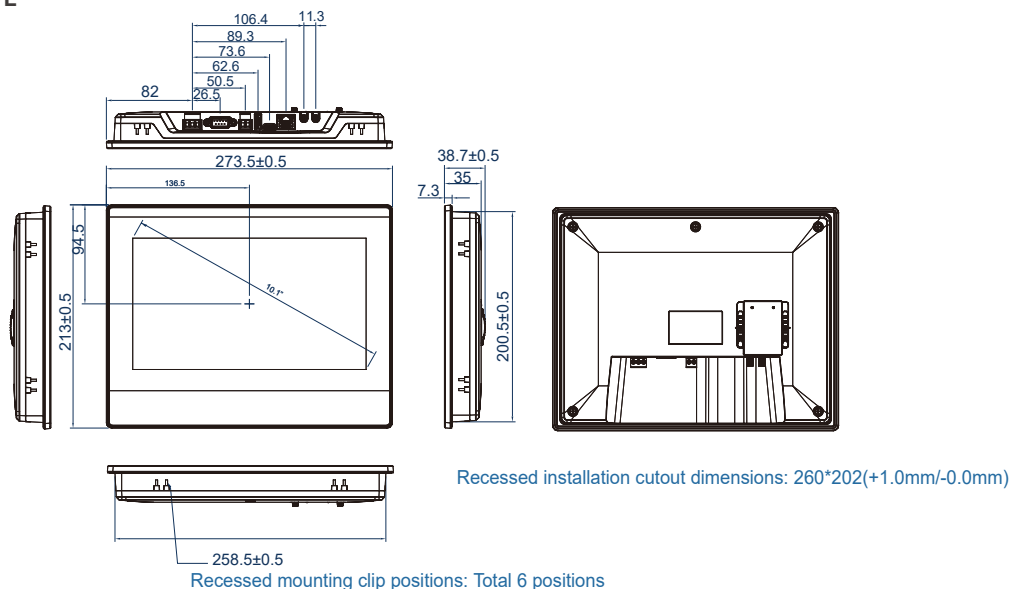
- HS7043WE



- HS6370W/HS6370WE



- HS6400W/HS6400WE



## Accessories

### • Cables

Model	Description
FEA-RS485	RS485 Cable, 3m
FEA-RS232	RS232 Cable, 2m
FEA-FX	Cable for Mitsubishi PLC, 3m
FEA-FP	Cable for Panasonic PLC, 3m
FEA-DVP	Cable for Delta PLC, 3m
FEA-S7	Cable for Siemens PLC, 3m

# SHIHLIN ELECTRIC & ENGINEERING

Transmission & Distribution, Electrical Products, Power Control, Switches & Breaker, Factory Automation, Automotive Electrical Components

Distributor

B250613E.HMI-BO3